

ONE x ONE

Moving Public Education Forward

FOURTH ANNUAL
CONVENTION
JANUARY 23, 2016



JACKSONVILLE
**PUBLIC
EDUCATION**
FUND

Powering Potential



QUICK GUIDE

Welcome	3
Logistics	4
Today's Agenda	5
Breakout Sessions	6-7
What It Means to Be a Delegate	8
Social Media Tipsheet	9
Education Perceptions Poll	10-11
Academic Indicators	12
Personality Quiz	13



WELCOME TO THE 2016 ONE BY ONE CONVENTION

Unlocking the Potential of Every Child: Equity in Education

It's hard to believe that four years ago, we held the first ONE by ONE Convention. In our wildest dreams, we couldn't have imagined how this movement has grown.

On behalf of the Board of Directors and staff of the Jacksonville Public Education Fund, we want to extend our deep gratitude for your commitment to public education and for serving as a ONE by ONE Delegate. As an independent nonprofit committed to informing and mobilizing the community to advocate for universally high-quality public schools for all children, we are committed to giving you the opportunities and tools to do just that. Today, we'll look at this quest through the lens of equity, hearing from education leaders from the superintendent to students —and, most importantly, YOU!

Since the first convention in 2013, delegates have become some of the strongest voices for children in our city. All have different voices and perspectives, but all share the goal of moving public education forward so that all children have access to a high quality public education. Today, you will connect with all kinds of citizens from all over the city. Diversity is our strength. As public education ambassadors, you will be asked to serve as leaders in connecting the community with opportunities to improve the quality of public education in Duval County. And we'll ask you to share stories of change with us and the people in your networks.

Please take a moment to review the information in this booklet — it has important tips and tools so you can have the best experience today and in the year to come. Finally, we want to express our sincerest gratitude for being here today. It is incredible to see people from all over our city working to ensure that children in our city are prepared to succeed.

Thank you for moving public education forward!



Rev. Torin T. Dailey
Chairman
Board of Directors

Trey Csar
President

LOGISTICS AND DETAILS

Location

Lexington Hotel and Conference Center, 1515 Prudential Drive, Jacksonville, FL 32207
Formerly the Wyndham adjacent to the School Board Building

Registration

The conference center is located in the rear of the building. Registration will take place in the ballroom foyer, with registration tables being located just outside the grand ballroom. To enter the conference center, upon driving onto the property, pass the main hotel entrance through the black gate. Continue to bear right and the conference center entrance will be on the right. Once inside, please sign in, collect your name tag and session materials. You may then proceed to select light breakfast samples prepared by Duval County Public Schools students.

Parking

Complimentary parking is available for all attendees. The parking lot is located in front of the conference center. Upon driving onto the property, pass the main hotel entrance through the black gate and continue to bear right. The conference center entrance will be on the right and there will be event signage on the outside of the building, as well as parking attendants, to assist you.

Attire

We recommend comfortable business casual dress as there will be a fair amount of movement from one activity to the next.

Emergency Contact

In the event of an emergency, please dial 911 or notify a Jacksonville Public Education Fund or Lexington staff member. For any last-minute issues on the day of the convention, please contact Maira Martelo at (904) 535-7143 or Ywana Allen at (404) 429-1112.



TODAY'S AGENDA

Program Emcees: Allishia Bauman and Travis Pinckney, Community Advisory Team, Jacksonville Public Education Fund

Breakfast, Registration and Networking

8 a.m.

Doors open at 8 a.m. for registration and breakfast samples prepared by students of the Duval County Public Schools Culinary Arts Departments from Frank H. Peterson Academies, Terry Parker High School, and William M. Raines High School. Ask the students about their creations as they compete in a friendly school vs. school culinary competition.

Opening and Pledge of Allegiance

9 a.m.

Westside High School Drumline & Color Guard

Welcome and Invocation

Rev. Torin T. Dailey, Chair, Jacksonville Public Education Fund Board of Directors
The Honorable Mia Jones, District 14, Florida House of Representatives

Equity and the Jacksonville Public Education Fund

Trey Csar, President, Jacksonville Public Education Fund

Ice Breaker: What's Your Advocate Personality?

Skit by First Coast High School Theater Students

Unlocking Equity in Public Education

Introduction by Kerri Stewart, Chief of Staff to Mayor Lenny Curry

Keynote: Dr. JeffriAnne Wilder, Director, Institute for the Study of Race and Ethnic Relations, University of North Florida

Equity and Duval County Public Schools

Dr. Nikolai Vitti, Superintendent, Duval County Public Schools

Community Representatives: Michelle Braun, President & CEO, United Way of Northeast Florida; Tim Sloan, parent; Dr. Mai Dinh Keisling, teacher and parent; Esther Iya, student

Delegate Table Discussion

Lunch Break

11:30 a.m.

Please pick up your lunch box and return immediately to the ballroom for the next segment!

First Coast High School Choir

11:45 a.m.

Student Voices: Reflections on Equity

Guided by Mercedes Trapp

Student panel: Faith Febus, Greg Hill, Arin Bentley

First Breakout Session

12:30 p.m.

Second Breakout Session

1:30 p.m.

Reflection

2:30 p.m.

Dwight James III, spoken word artist and student at Douglas Anderson High School

Call to Action and Closing Remarks

2:45 p.m.

Ronnie King, Vice Chair, Community Advisory Team

Special thanks to the staff of City Year for gathering the faces and voices of students during the morning slideshow!

BREAKOUT SESSIONS

All breakout sessions will repeat during each block.

Getting Young Children Ready for School

Speaker: Dr. La'Tara O. Lampkin

Location: Tug



Dr. La'Tara O. Lampkin is an Associate in Research at Florida State University, and former Assistant Professor of Educational Policy and Leadership at the University of North Florida. She has an array of professional experiences in the university, private and public sectors and a critical understanding of issues, research and practice in these sectors. Her research focuses on the adoption, implementation, and impacts of federal and accountability policies and reform efforts on district and school-level policies and program initiatives designed to improve student outcomes.

Developing, Retaining and Empowering Great Teachers

Speakers: Tequilla Banks and Liz Cutrona

Location: Grand Ballroom



Tequilla Banks is passionate about interrupting intergenerational poverty and improving social mobility for all students, and views education as a key conduit for change. Tequilla is a Vice President with TNTP, and works to ensure that districts and states are doing everything they can to support great teaching, from designing better evaluation and feedback systems and supporting managers, to improving central office effectiveness and decision-making and crafting smarter policies. Before joining TNTP, Tequilla worked for nine years in Memphis City Schools, where she oversaw the district-wide effort to increase teacher and leader effectiveness.



As a Partner at TNTP, Liz Cutrona designs and leads innovative solutions for improving instructional quality. Liz has led teacher training and certification for TNTP programs in Memphis, Nashville, and Baltimore, and was the lead architect of TNTP's Fast Start coaching model. Her current work focuses on helping teachers, schools and districts meet the demands of college and career readiness standards. She oversees TNTP's partnerships with Duval County Public Schools and Fresno Unified School District, which focus on building the instructional leadership capacity of central office leaders, principals and their managers as they help schools implement more rigorous standards.



BREAKOUT SESSIONS

Preparing Students for Success After High School

Speaker: Laurie Meggesin

Location: Commerce Dockside



Laurie Meggesin joined Florida College Access Network as its Executive Director in 2013. Florida CAN is a statewide network of leaders and organizations that are collectively devoted to dramatically increasing college and career readiness, access, and completion for all Florida students. Laurie started her career as an English teacher and job skills coach for recent immigrants working to assimilate into the American workforce and later, as a program manager for at-risk youth. She then became an attorney and served as a partner of a national law firm before joining Florida CAN.

Social-Emotional Learning and Discipline Policies

Speaker: Kim Williams and Caitlin Simmons

Location: Outbound



Kim Williams is a skilled resource and training developer with a background in large scale evidence-based program implementation for positive youth development. She has led statewide efforts to provide technical assistance to facilitate quality implementation, data collection and reporting, sustainability of several Blueprints for Healthy Youth Development model programs. Kim is responsible for supporting and advancing the mission of Frameworks of Tampa Bay, Inc. as the Chief Education Officer. Frameworks' mission is to teach youth to manage their emotions, develop healthy relationships, and make good decisions for academic, career, and personal success.



Caitlin Simmons has a passion for youth empowerment through systemic change, and she believes a major component for success, which is often overlooked in education, is social-emotional health and well-being. She currently leads a middle school project at Frameworks which is in 50 schools throughout Hillsborough County and will impact approximately 17,000 students in the '15-'16 school year. She taught fifth grade in the Orlando area for five years. After leaving the classroom to pursue her graduate degree, she taught Developmental Psychology to future educators at the University of Central Florida. She also conducted educational research at the Peabody Research Institute at Vanderbilt University.

Testing & Accountability

Speaker: Dr. Diane Archer Banks

Location: Sail



As the Founder, President, and Chief Executive Officer of Educational Access Institute, Inc.; Dr. Diane Archer-Banks uses her organization as a platform to create opportunities for young men and women globally to achieve their own levels of excellence and become future leaders. A published educational researcher and consultant with more than 35 years teaching and administrative experience in K-12 and higher education, she has presented nationally and internationally on topics related to the intersectionality of race, class, gender, and culture on students' schooling experiences, postsecondary access and success among low-income and underserved students, youth leadership development, program development and evaluation, technology integration in the learning environment, and parental involvement in children's schooling experiences.

WHAT IT MEANS TO BE A DELEGATE

ONE by ONE Delegate expectations: What is your role?

Being a ONE by ONE Delegate means you already care passionately about children in our community. So what's next?

Before the ONE by ONE Convention

There's not a whole lot to do before the convention, but here are a few tips:

- Read the Delegate packet so you are prepared for the conversation.
- Energize yourself to participate in an incredible event where you will work with hundreds of diverse, passionate education advocates from all over the city.

During the ONE by ONE Convention

You are a Delegate because you represent others in your neighborhood, school, interest group or community in this movement to improve the quality of public education in Duval County. Your main responsibility during the Convention is to foster positive connections with others. That includes:

- Learning as much as you can from speakers and other Delegates.
- Participating in activities.
- Respectfully sharing your opinions with others. Listen to find commonalities — we may have more in common than at first glance!

After the ONE by ONE Convention

Here's where we move from conversation to action. What we hope you'll do after today:

- Take what you learn and share it with friends, family members and neighbors. We have learned that nothing replaces the power of personal connection — you're here because people listen to you! Use your voice to continue the conversation.
- Stay connected with the Jacksonville Public Education Fund. Share your stories! Tell us about the ways you and other people you know are engaged in supporting public education in our city so we can widen your impact. Email your stories to news@jaxpef.org.
- Volunteer in a school or with any of the many non-profit organizations who are working to improve the quality of life for the children in our city.
- Attend upcoming ONE by ONE quarterly meetings on important issues in public education. We'll be in touch soon about the date of the next one.

There's just one more thing ...

And that's gratitude. From the board, staff and volunteers of the Jacksonville Public Education Fund, thank you for being here today and moving public education forward. Our city's future depends on you!

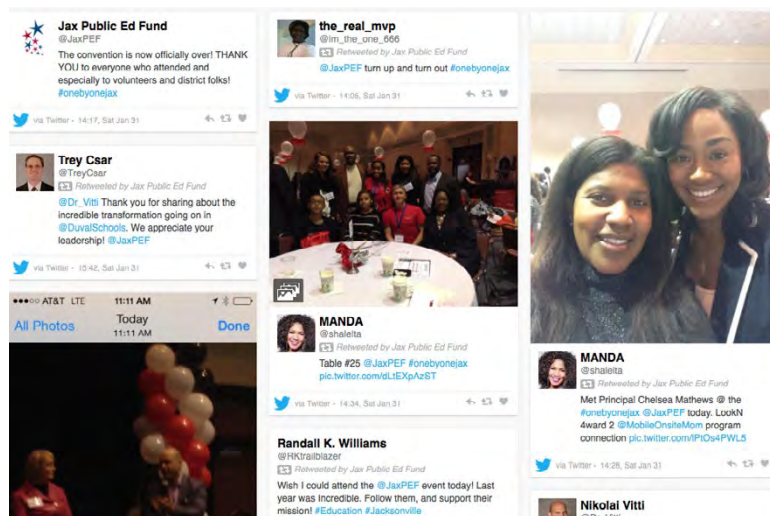


SOCIAL MEDIA TIPSHEET

Participate in the conversation throughout the room — and beyond

Join delegates, volunteers and staff on social media during the Fourth Annual ONE by ONE Convention! Your voice will add so much to the collective experience of the convention and generate community awareness about the importance of public education!

Your photos and posts on social media (especially Twitter and Instagram) will be shared throughout the day of the convention through a social media wall — and they will be part of a live feed so that people who can't attend the convention can share in the excitement.



Amplify the impact of #ONEbyONEjax and #MovePublicEducationForward

Help build the momentum and send a message that educating our children is vital to the future of Jacksonville! Make sure to post with #ONEbyONEjax or #MovePublicEducationForward so we can share the energy of the day with others and trend locally.

All you have to do is bring your phone and be ready to spread the word. But first, connect with us on social media so you can be ready:

- Like us on Facebook: [Facebook.com/JaxPEF](https://www.facebook.com/JaxPEF)
- Friend us on Instagram: @JaxPEF
- Follow us on Twitter: @JaxPEF

Feeling tongue-tied?

New to social media? Just not sure where to start? Here are some sample messages!

- *I'm a ONE by ONE Delegate at the Fourth Annual Convention! #ONEbyONEjax*
- *Passionate about public education? Join the ONE by ONE Convention live using #ONEbyONEjax*
- *I #MovePublicEducationForward by ... [fill in your own item here]*
- *I am committing my time & energy to increasing Caregiver and Community Involvement #ONEBYONEJAX*
- *I helped create the ONE by ONE priorities in 2013. I'm back for the Fourth Annual #ONEbyONEjax Convention!*
- *I'm moving public education forward at the #ONEBYONEJAX Convention*

Spread the knowledge and share the faces

Hear something interesting? Make sure you share data points and facts that will be part of the program throughout the day. And don't forget to capture the faces of the day — we encourage you to post selfies and include your fellow delegates too!

2016 EDUCATION PERCEPTIONS POLL

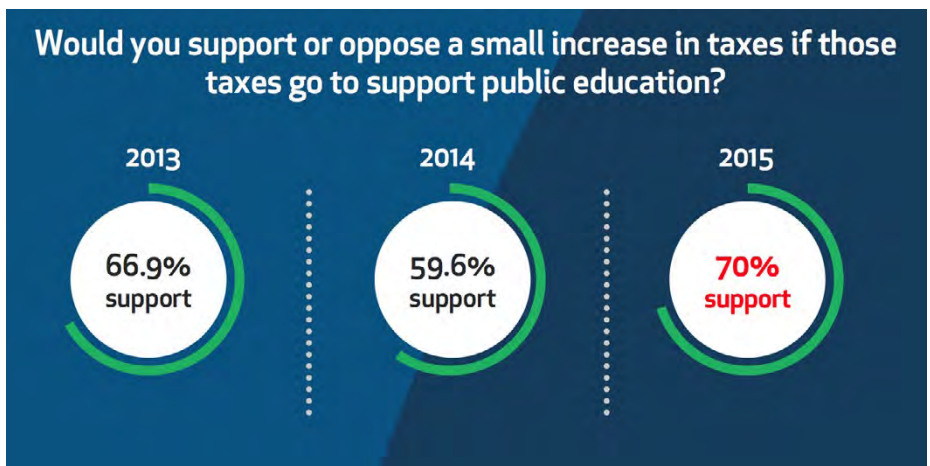
Every year, the Jacksonville Public Education Fund conducts a poll to gauge the opinion of the Duval County community on key issues facing public education in our city. The poll was conducted by the University of North Florida Public Opinion Research Laboratory in early November. Here, we pulled out some of the key findings that we think you need to know. See the full results and check out interactive data at jaxpef.org.

High confidence in educators

The poll found continuing support for district leadership with more than half of respondents rating Superintendent Nikolai Vitti (55%) and the Duval County School Board (58%) as effective in improving public education in Jacksonville – their highest ratings in the past 3 years. Teachers were rated even higher, with 77% saying they are effective in improving public education.

Resources for public education

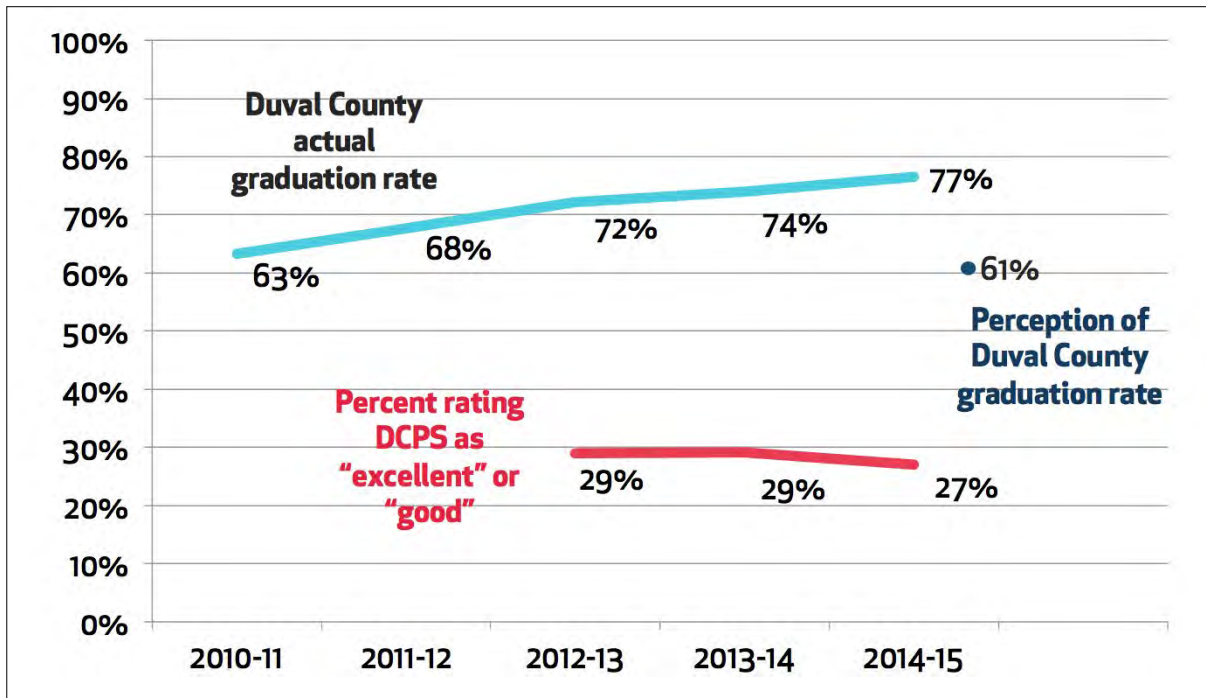
Seven in ten respondents said they would support a small increase in taxes if the money goes to public education. Respondents strongly supported funds going to renovating or rebuilding old schools, building new schools in areas where the populations was growing, and expanding technology.



Progress on priorities

For the second year in a row, respondents most frequently identified “Engage parents, families and the community in schools” as the DCPS Strategic Plan priorities where the district has made the most progress. New this year was a significant increase in the ratings of DCPS’s progress in the area of “Recruitment, development and retention of great teachers and leaders.” This finding was consistent with the fact that 77% of respondents also rated DCPS teachers as effective in helping to improve public education in Jacksonville.





Many unaware of improvements to the graduation rate

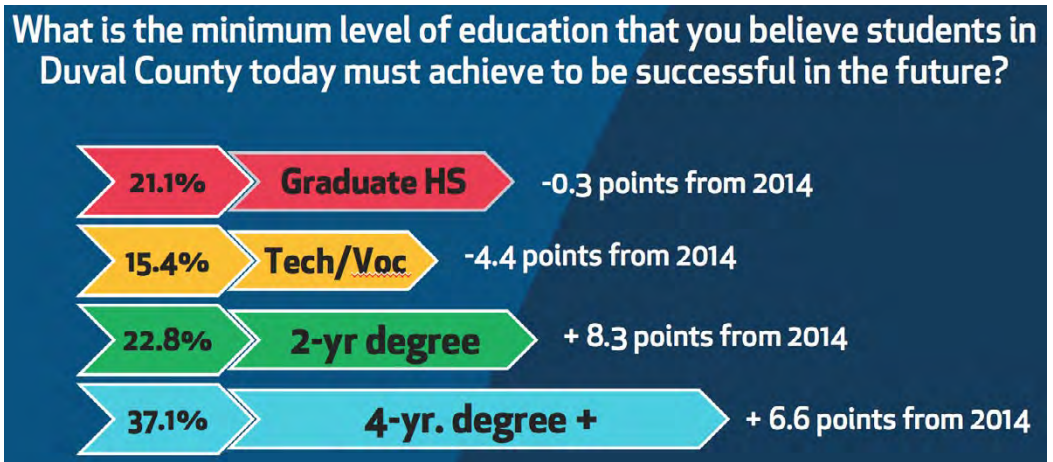
On average, respondents thought Duval County Public High School's graduation rate was about 61%, which is 15.6 points lower than the 2014 graduation rate (the latest known at the time of the survey), which was 74%. The graduation rate for 2015, released in January 2016, is 76.6%.

Split on testing and school accountability

Approximately half of participants disagreed that the state should wait a year before releasing school grades, because of potential issues with the new test during this year of transition. This is important because "test scores and school grades" was the factor most commonly listed by respondents in how they would decide on choosing a school. At the same time, confidence in test scores and school grades is declining. Although it remains the most commonly listed factor, fewer people said they would use test score and school grades to evaluate a school in 2015 than in 2014.

Policy issues

Approximately three-quarters of respondents said parents in Duval County should be allowed to enroll their children in any public school in the district regardless of where they live. When filtered by just parent responders, the percentage was even higher. When it comes to whether the district usually considers public opinion when making decisions, 39% agree and 55% disagree.

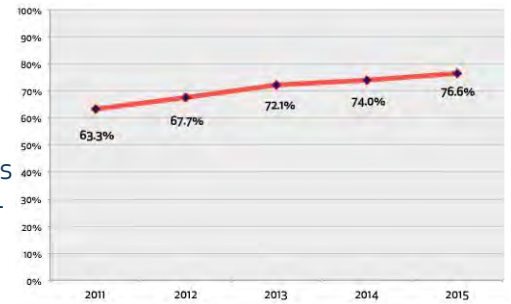


KEY ACADEMIC INDICATORS

Overall, how did our schools perform in 2015? You'll receive a data summary at each breakout session related to that topic. You'll also receive Duval County Public Schools' District Profile. Here are some other key things you need to know:

Graduation rate continued to rise, especially for minority students

Florida Department of Education figures released in January showed that in the 2014-2015 school year, Duval County's public school graduation rate rose to 76.6% — continuing a long-term trend of improving faster than the state as a whole and peer districts. Graduation rates rose significantly among African-American students (at 71%, now highest among urban districts in Florida and higher than the state average) and among economically disadvantaged students. Check jaxpef.org for more information.



Transition causing disruption in reporting of school grades, reading and math tests

In the 2014-2015 school year, Florida public schools fully made the switch to the new Florida Standards, which outline what students should know and be able to do in English language arts and math. This shift required a new state-wide standardized test, with the FCAT 2.0 being replaced by the Florida Standards Assessment (FSA). The FSA was first administered to students in the spring of 2015. The results of this test have not yet been released, but are expected in the next several weeks. The same is true for school grades — as they are based on the new test, they have not yet been released. Further, these grades will not be comparable to previous years. That's because typically, half of school grades are based on growth from one year to the next. Because comparisons between the FCAT 2.0 and the FSA are not appropriate, the 2015 school grades will not include improvement from one year to the next. They will only include the percentage of students scoring at Level 3 (considered passing) or above. The best thing that public education advocates can do is to wait for FSA scores and school grades to be released in summer 2016, which will reflect performance and growth on the spring 2016 administration of the FSA. Check out jaxpef.org for more information.

Looking beyond academic data

Beyond graduation rates and indicators of academic achievement, there are several other measures that can tell us how well students are doing. First of all, Duval County Public Schools now administers the Gallup survey to students. The Gallup survey has shown small but significant increases in student wellbeing, hope and engagement (see jaxpef.org for a full analysis and school by school results).



WHAT'S YOUR ADVOCATE PERSONALITY?

Take this quick quiz to find out!

.....

Which quote most inspires you?

- a. "Progress is impossible without change, and those who cannot change their minds cannot change anything."
— George Bernard Shaw
- b. "Educating the mind without educating the heart is no education at all." — Aristotle
- c. "I believe that education is all about being excited about something. Seeing passion and enthusiasm helps push an educational message." — Steve Irwin
- d. "When you're part of a team, you stand up for your teammates. Your loyalty is to them. You protect them through good and bad, because they'd do the same for you." — Yogi Berra

Which is most likely to give you a thrill?

- a. When I speak up with others against injustice.
- b. When I help a child be supported emotionally.
- c. When I'm at a pep rally, performance or celebration with others showcasing student success.
- d. When I see that "light bulb" go off in a child's eyes after months of hard work.

Find out what your answers mean at the morning session of the ONE by ONE Convention!

When I get passionate about an issue, I tend to ...

- a. Look for ways to challenge the status quo.
- b. Feel deeply and empathize with the children involved.
- c. Look for the heroes and solutions to the problem and champion them.
- d. Start by approaching it from the perspective of those who are grappling with the issue.

Which statement best describes you?

- a. I want a world where we're never afraid to change the system to work best for all children.
- b. I want a world where every child is treated as an individual and supported inside and outside of school.
- c. I want a world that is less negative, so we can create an enthusiastic learning environment for children.
- d. I want a world where change is not a constant, because stability and proven strategies are key to student success.

Now for something fun ... what's your favorite animal and why?

- a. Tigers, because they are courageous and strong.
- b. Horses, because they are sensitive and elegant.
- c. Dogs, because they are happy and lift your spirits.
- d. Chimpanzees, because they are intelligent and loyal.

.....

This image shows a single sheet of white paper with horizontal blue ruling lines. The lines are evenly spaced and run across the width of the page. There are no margins, text, or other markings on the paper.

This image shows a single sheet of white paper with horizontal blue ruling lines. The lines are evenly spaced and run across the width of the page. There are no margins, text, or other markings on the paper.



JACKSONVILLE PUBLIC EDUCATION FUND

Powering Potential

BOARD OF DIRECTORS

Rev. Torin Dailey, Chair
Poppy Clements, Vice-Chair
Dr. Shannon Perry, Secretary
Michael Ward, Treasurer
Dr. Jordan Baker
Ricardo Bedoya
Gary Chartrand

Judge Brian Davis
Cindy Edelman
Ronnie Ferguson
Kevin Hyde
Donna Orender
Matt Rapp
Kenneth Reddick

Sally H. Singletary
Anita Vining
Cleve Warren
Kifimbo Holloway-Parnell, *ex-officio*
Ronnie King, *ex-officio*
Ashley Smith Juarez, *ex-officio*
Dr. Nikolai P. Vitti, *ex-officio*

ADVISORY COUNCIL

Audrey Moran, Chair
Judge Henry Adams
Carol Alexander
John Anderson
John Baker

Bruce Bower
Hester Clark
Poppy Clements
Rev. Torin Dailey
Celeste Donovan

Cindy Edelman
Dan Rice
Nina Waters
Delores Barr Weaver

COMMUNITY ADVISORY TEAM

Ronnie Ferguson, Chair
Ronnie King, Vice Chair
Allishia Bauman
Apyrl Shakelford
Christine Dahnke
Dr. Jevetta Stanford
Leandrew Mills III
Dr. Mai Dinh Keisling

Dr. Mary Rose
Mickee Brown
Dr. Irvin PeDro Cohen
Simone Beans
Travis Pinckney
Sol Wynter
Hind Chahed
Moitrey Nayek

Anwar Bey
Iris Caro
Asya Smith
Aakilah Strappy
Lashawn Streater
Tim Sloan

STAFF

Trey Csar, President
Pam Paul, Executive Vice President
Dr. Kimberly Allen
Deirdre Conner
Imani Hope

Valerie Howard
Megan Hubbuch
Maureen Klein
Joan Leslie
Dr. Maira Martelo

Dr. Jason Rose
Daniel Snook
Ale'ta Turner

Convention Consultants: Ywana Allen and Jevetta Stanford